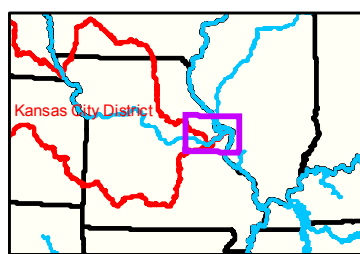


Hermann = 6.65 at time of collection 03 November 2020

Gage_L

Source: Esri, DigitalGlobe, GeoEye, Earthstar Geographics, CNES/Airbus DS, USDA, USGS, AeroGRID, IGN, and the GIS User Community



LEGEND

	< 8		< 8 ft		Green Passing		Green CAN
	8 - 9		8 - 9 ft		Red Passing		Red NUN
	9 - 9.5		9 - 10 ft		Green Crossing		
	9.5 - 10		10 - 12 ft		Red Crossing		
	10 - 12		River Mile				
	12 - 14		Sailing Line				
	14 - 16		BSNP Structure				
	> 16		Levee				
					Green		Green CAN
					Red		Red NUN
					Junction		

Scale: 0, 312.5, 625, 937.5, 1,250, 2,500 Feet

Vertical Datum: Soundings are shown in feet and indicated depths are referenced to water surface at time of collection.

Horizontal Coordinate System: World Geodetic System of 1984 (WGS84), projected to the Universal Transverse Mercator (UTM) Zone 15 North. Distance units in U.S. Survey Feet.

Vertical Datum: Soundings are shown in feet and indicated depths are referenced to water surface at time of collection.

The information depicted on this map represents the results of a survey conducted on the date indicated and can only be considered to represent the general condition existing at that time.

The location of navigation aids are based on and provided by the U.S. Coast Guard.



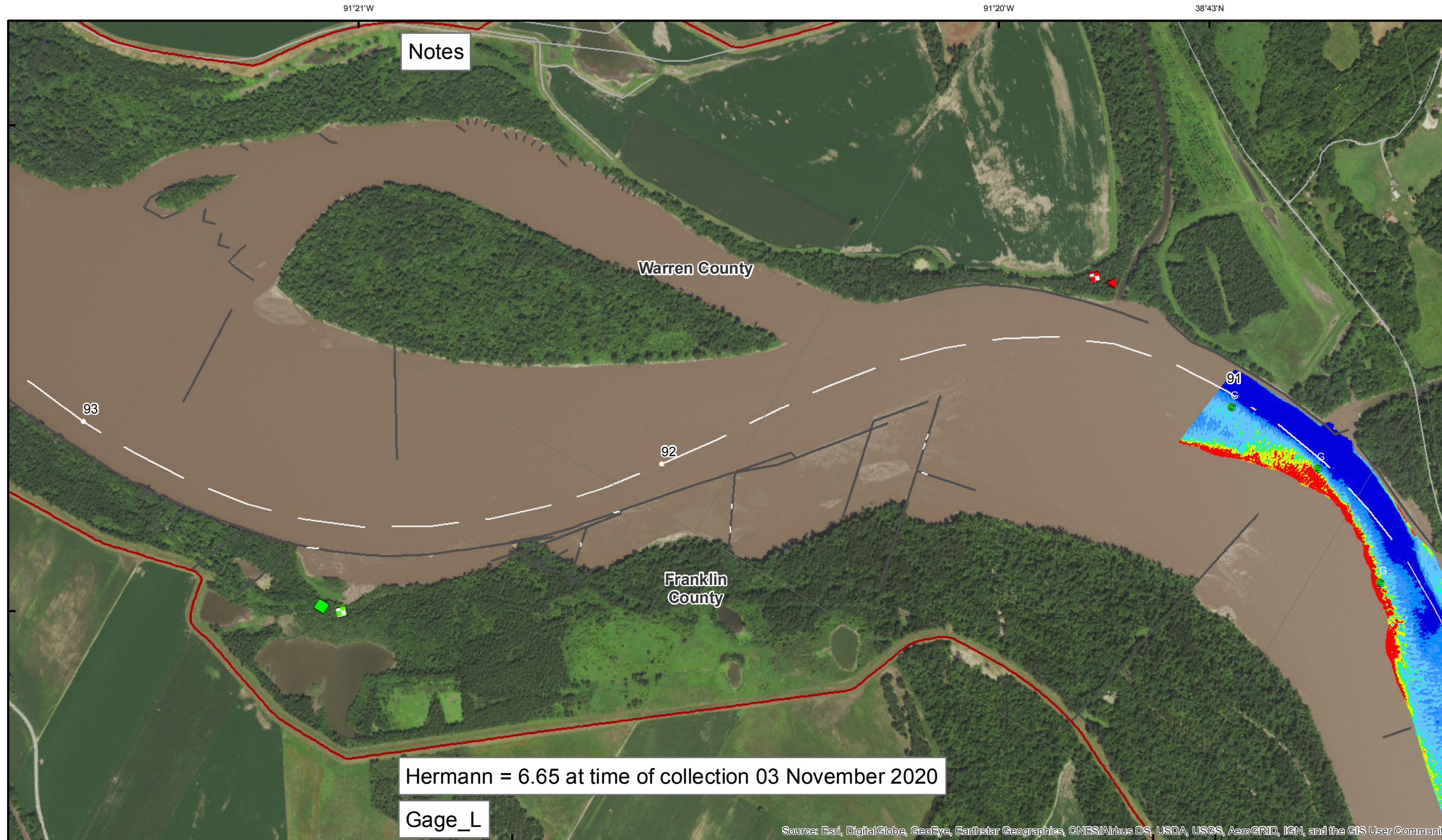
DISCLAIMER: The United States Government is authorized to reproduce and distribute reprints for Government purposes not withstanding any copyright notation that may appear hereon. The United States Government makes no warranty, express or implied, with respect to the accuracy or completeness of the information contained in this document. The United States Government is not liable for any damages, including those resulting from the use of the information contained in this document, arising out of the use of the information contained in this document. The United States Government is not liable for any damages, including those resulting from the use of the information contained in this document, arising out of the use of the information contained in this document.

KANSAS CITY DISTRICT MISSOURI RIVER AREA OFFICE	
Submitted By:	MRAO
Reviewed By:	MRAO
Approved By:	MRAO

Survey Information

MO_01_LMR
MO_01_LMRX_20201103_CS_90_0_92_0_SORT
03 November 2020

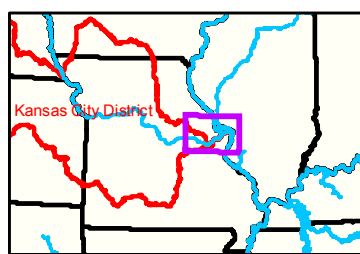
Sheet Number
41 of 46



DISCLAIMER: The United States Government is authorized to reproduce and distribute reprints for government purposes not withstanding the copyright notation thereon. It is authorized to reproduce and distribute reprints for government purposes not withstanding the copyright notation thereon. It is authorized to reproduce and distribute reprints for government purposes not withstanding the copyright notation thereon. It is authorized to reproduce and distribute reprints for government purposes not withstanding the copyright notation thereon. It is authorized to reproduce and distribute reprints for government purposes not withstanding the copyright notation thereon.

KANSAS CITY DISTRICT MISSOURI RIVER AREA OFFICE	
Submitted By:	MRAO
Reviewed By:	MRAO
Checked By:	MRAO
Approved:	

Survey Information
 MO_01_LMR
 MO_01_LMRX_20201103_CS_90_0_92_0_SORT
 03 November 2020



91°20'W 91°19'W 38°41'N

LEGEND

< 8	< 8 ft	Green Passing	Green	Green CAN
8 - 9	8 - 9 ft	Red Passing	Red	Red NUN
9 - 9.5	9 - 10 ft	Green Crossing	Junction	
9.5 - 10	10 - 12 ft	Red Crossing		
10 - 12	River Mile			
12 - 14	Sailing Line			
14 - 16	BSNP Structure			
> 16	Levee			

0 312.5 625 937.5 1,250 2,500 Feet

NOTES:
 Horizontal Coordinate System: World Geodetic System of 1984 (WGS84), projected to the Universal Transverse Mercator (UTM) Zone 15 North. Distance units in U.S. Survey Feet.
 Vertical Datum: Soundings are shown in feet and indicated depths are referenced to water surface at time of collection.
 The information depicted on this map represents the results of a survey conducted on the date indicated and can only be considered to represent the general condition existing at that time.
 The location of navigation aids are based on and provided by the U.S. Coast Guard.

Sheet Number
 42 of 46